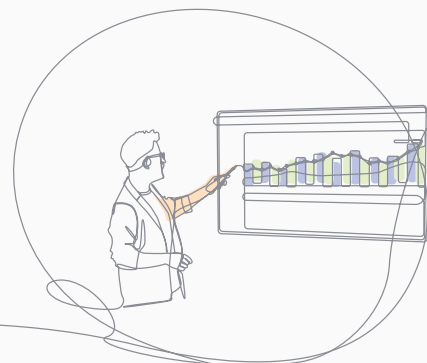


# HSJ Information

## Specialist Share Data (SSD)

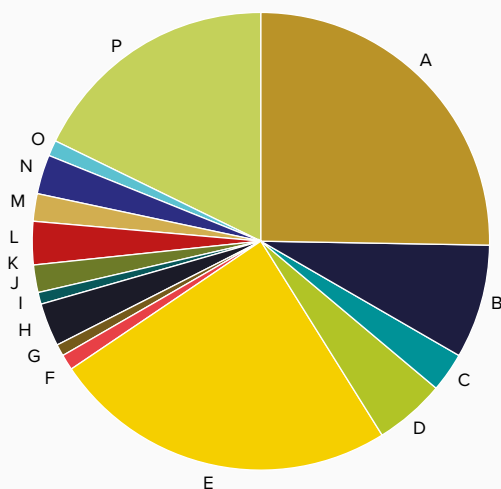
### Diffuse Large B-Cell Lymphoma (DLBCL): How SSD Monitors a Rapidly Evolving Disease Landscape



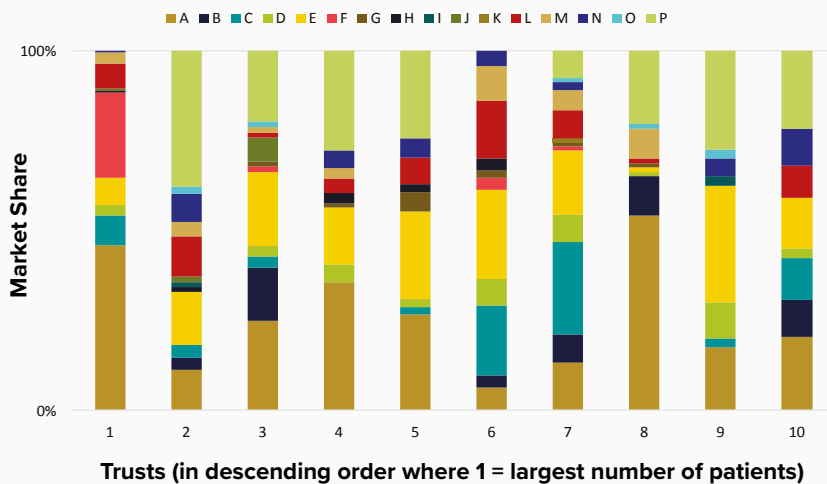
The emergence of new treatment options for DLBCL means better response rates and long-term survival, and ultimately, more hope for patients

SSD has tracked eight DLBCL treatments since July 2022 up to sixteen treatments in January 2025, and whilst at a national level we see three dominant regimens being used to treat approximately 70% of DLBCL patients, there is considerable variation at NHS Trust level.

Market Share by DLBCL Treatment, January 2025



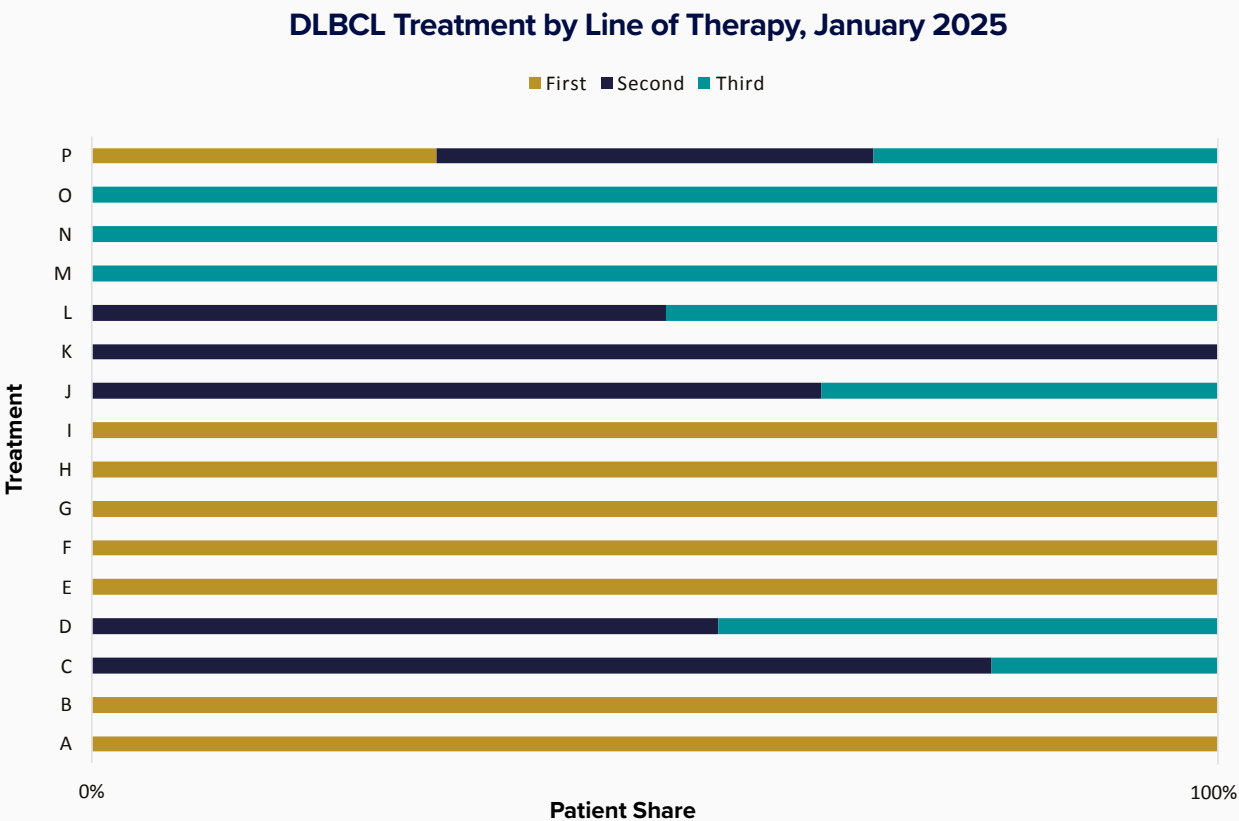
Market Share in Top 10 DLBCL Trusts, January 2025



Patients receiving these treatments are captured by SSD at an NHS trust level, allowing our clients to **visualise precise variation in secondary care behaviours**, as well as **analyse DLBCL treatment trends** with respect to patient volume, market share, geography, for example.

These core data are accompanied by **insight into clinical trials and patient referrals**, revealing where patients are receiving - or being sent to receive - cutting-edge treatments.

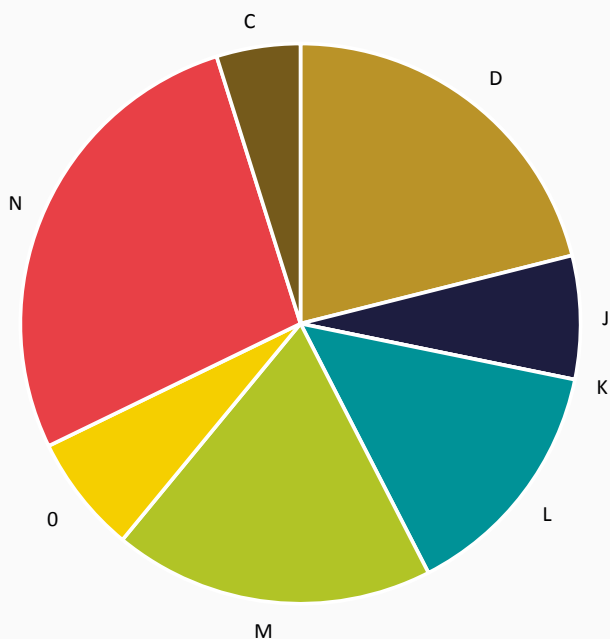
SSD provides additional layers of granularity through reporting DLBCL treatment across first, second and third line settings, further enhancing and expanding insight that can be derived.



More treatment options for DLBCL mean that patients who relapse or do not respond to initial treatment have more opportunities to find a treatment that induces remission or better manages disease progression.

**Through line of therapy understanding,** stakeholders are furnished with the information they need to bring relapsed and refractory patients vital alternatives.

**3rd Line DLBCL Market Share, January 2025**

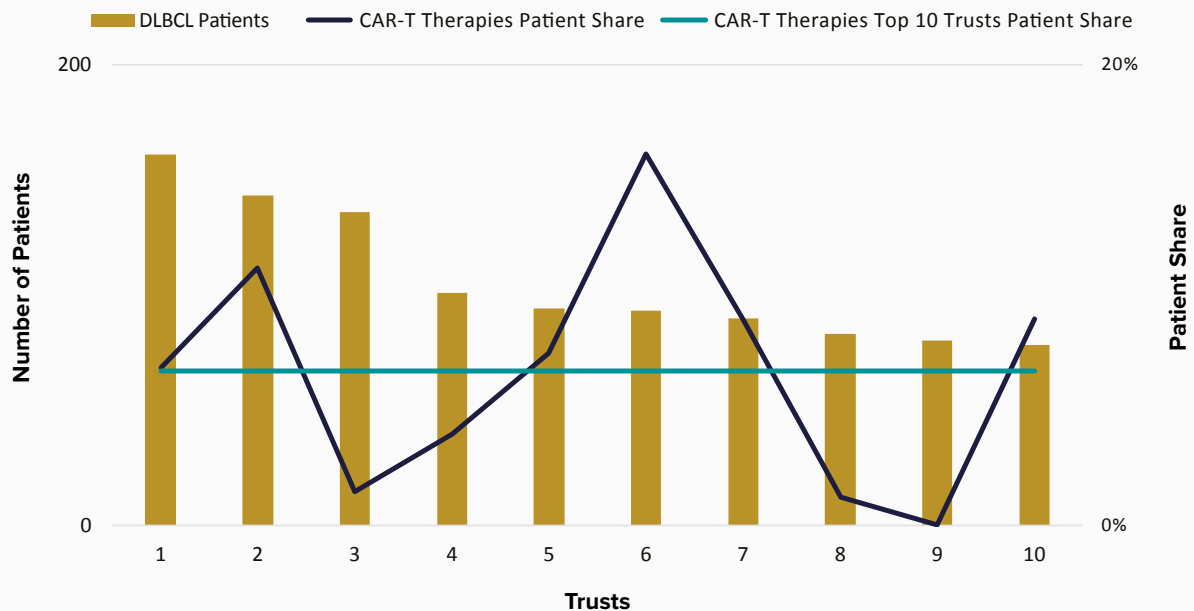




This enhanced knowledge also makes it easier to develop strategies that promote the broader use of advanced, potentially life-saving treatments.

For example, if CAR-T therapies were to have reached the average patient share of the top 10 DLBCL trusts, there would have been an additional **20** patients on these therapies in January 2025.

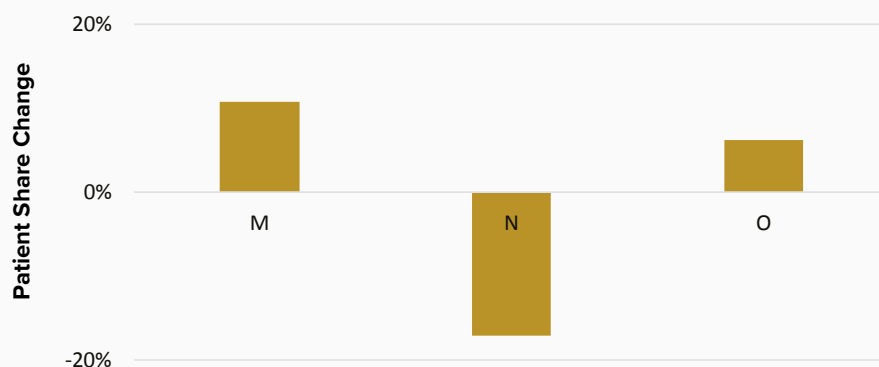
### CAR-T Therapies Market Opportunity in Top 10 DLBCL Trusts, January 2025



SSD analyses interactions between and within these progressive treatment classes, **highlighting treatment trends and where it might be most useful to continue or change them.**

With monoclonal antibodies, we see varying trends between products, with two products showing increases in patient share in DLBCL, and another declining, despite all three regimens having recently become available for prescribing.

### Change in Third-Line DLBCL Monoclonal Antibody Patient Share, July 2024 versus January 2025



**Questions?** Please get in touch



**+44 (0)333 355 8998**



**marketing@hsjinformation.co.uk**